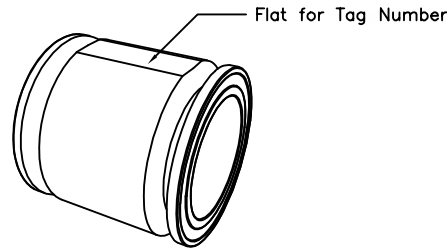
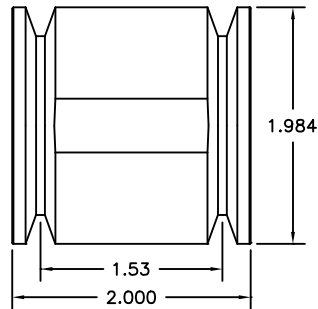
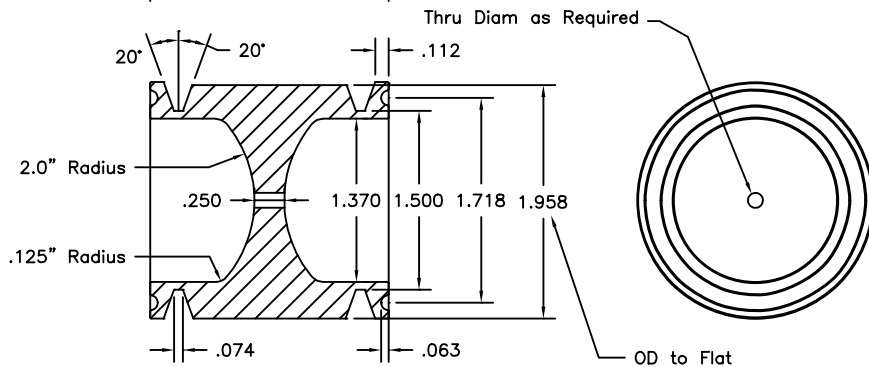




REVISIONS				
ZONE	REV	DESCRIPTION	DATE	APPROVED



HEAT #	TAG NO.	ORIFICE $\phi$
XXX	XXXXX-XX-XXX-X	.XXX



- \* Required to be etched on body.
- Tag #
  - Heat #
  - Orifice size

<b>Diede Precision Welding, Inc.</b> Precision welding and consulting for quality sensitive applications.	Material : 316L Stainless steel		
Phone: (303) 310-3507 Fax: (303) 678-9541	SIZE B Job No.	DWG NO. EI/MS-77705-1.5C	REV B
Sep 11, 2008	SCALE FULL		SHEET

# CERTIFICATE OF TEST



Certification Date  
28-OCT-2009

CUSTOM ORDER NUMBER

CUSTOMER PART NUMBER  
VBL WADE

6050 DOWNING STREET  
P.O. BOX 16065  
DENVER CO 80216

Invoice Number  
S939956

SOLD TO:

SHIP TO:

HIGH POINT CUSTOM MACHINE LLC  
UNIT E  
1822 SKYWAY DRIVE  
LONGMONT CO 80504

HIGH POINT CUSTOM MACHINE, LLC  
1822 SKYWAY DRIVE  
LONGMONT CO 80504

Description: 316/316L ANN HR RT BAR  
2 RD S/C 3'0 (36")  
HEAT: E90303

ASTM A479  
Line Total: 48.12 LB

ITEM: 509350

### Specifications:

AMS 5648 K  
ASTM A276 08A  
ASME SA 182 E07  
DIN 50049  
ASME SA 193 E07  
ASTM A320 B8M CL1 08

AMS 5653 F  
ASTM A479 08  
ASTM A182 08A  
EN 10204 3.1.B  
ASME SA 320 B8M CL1 A05  
ASTM A193 08B

QQ S 763  
ASME SA479 A08  
ASTM A484 08  
SAE AMS QQS 763 B  
ASTM A262 PRAC E 98  
FED SPEC QQS 763 F

### CHEMICAL ANALYSIS

C	P	SI	NI	CU	N	TI	SN
0.02	0.037	0.469	10.08	0.522	0.062	0.002	0.009
V	CBTA	MN	S	CR	CO	MO	CB
0.06	0.02	1.77	0.025	16.58	0.245	2.03	0.02
AL	B						
0.004	0.004						

RCPT: R843166  
MILL : OUTOKUMPU

COUNTRY OF ORIGIN : UNITED KINGDOM

### MECHANICAL PROPERTIES

DESCRIPTION	YLD STR	ULT TEN	%ELONG	%RED	HARDNESS
	KSI	KSI	IN 02 IN	IN AREA	BEN
	38.8	86.5	52.5	74.7	147

GRAIN SIZE : 6 -

The above data were transcribed from the manufacturer's Certificate of Test after verification for completeness and specification requirements of the information on the certificate. All test results remain on file subject to examination.

We hereby certify that the material covered by this report will meet the applicable requirements described herein, including any specification forming a part of the description.

The willful recording of false, fictitious, or fraudulent statements in connection with test results may be punishable as a felony under federal statutes.

Material did not come in contact with mercury while in our possession.

MICHAEL BOSCH

  
MANAGER, QUALITY ASSURANCE

**CERTIFICATE OF TEST**



Certification Date  
28-OCT-2009

CUSTOM ORDER NUMBER

CUSTOMER PART NUMBER

VBL WADE

6050 DOWNING STREET  
P.O. BOX 16065  
DENVER CO 80216

Invoice Number

S939956

SOLD TO:

SHIP TO:

HIGH POINT CUSTOM MACHINE LLC  
UNIT E  
1822 SKYWAY DRIVE  
LONGMONT CO 80504

HIGH POINT CUSTOM MACHINE, LLC  
1822 SKYWAY DRIVE  
LONGMONT CO 80504

Description: 316/316L ANN HR RT BAR  
2 RD S/C 3'0 (36")  
HEAT: E90303

ASTM A479  
Line Total: 48.12 LB

ITEM: 509350

MATERIAL IS FREE FROM MERCURY CONTAMINATION  
NO WELD REPAIR PERFORMED ON MATERIAL  
CORROSION: OK  
MACRO: OK  
MICRO1: OK

-----  
COMMENTS

MELT PRACTICE EAF  
REFINING PRACTICE AOD  
COUNTRY OF MELT; UNITED KINGDOM  
COUNTRY OF MFG.; USA  
NAFTA COUNTRY OF ORIGIN IS COUNTRY OF MELT: UNITED KINGDOM  
MFG TO FINISHED BAR IN THE USA FROM BILLETS IMPORTED UNITED KINGDOM

The above data were transcribed from the manufacturer's Certificate of Test after verification for completeness and specification requirements of the information on the certificate. All test results remain on file subject to examination.  
We hereby certify that the material covered by this report will meet the applicable requirements described herein, including any specification forming a part of the description.  
The willful recording of false, fictitious, or fraudulent statements in connection with test results may be punishable as a felony under federal statutes.

Material did not come in contact with mercury while in our possession.

MICHAEL BOSCH

  
MANAGER, QUALITY ASSURANCE



## Certificate of Conformance

Customer: Diede Precision Welding, Inc.

Print Date: 11/04/09

### Processing and Fabrication

Customer Part Nos: EI-MS-77705-.75C, EI-MS-77705-1.0C, and EI-MS-77705-1.5C

Revision: \_\_\_\_\_ Quantity: (4) .75", (11) 1.0", and (15) 1.5"

Work Order No. 6261 - 9114 P.O. Number: 09-160

The 3 1.5" orifices were in with this batch. They have a .25" bore. Ehrich Diede.

### CERTIFICATIONS

ARC Process, Inc. certifies that the materials manufactured conform to all drawings and/or specification requirements except as modified by the purchase order or approved customer waivers.

### Statement of Quality:

ARC Process, Inc. certifies that we have on file at our facility the following objective evidence (for review): certifications, test reports, ARC approved process procedures, as applicable, and/or inspection records that have been reviewed and found to meet the drawing and/or specification requirements.

Units inspected, mechanically polished where required for EP preparation, and electropolished per ARC/SEMI standards. Units were baked-out at 70 °C for 2.0 Hours. Unit surfaces checked at quartering intervals and achieved surface characteristics of between 7 Ra and 10 Ra. Material specifications verified. Process and inspection steps are recorded on ARC-AIT Traveler DOC. NO. AG-121240-1149.

Signature:  Date: 11 / 4 / 09

Printed Name: Steve M. Reed Title: President